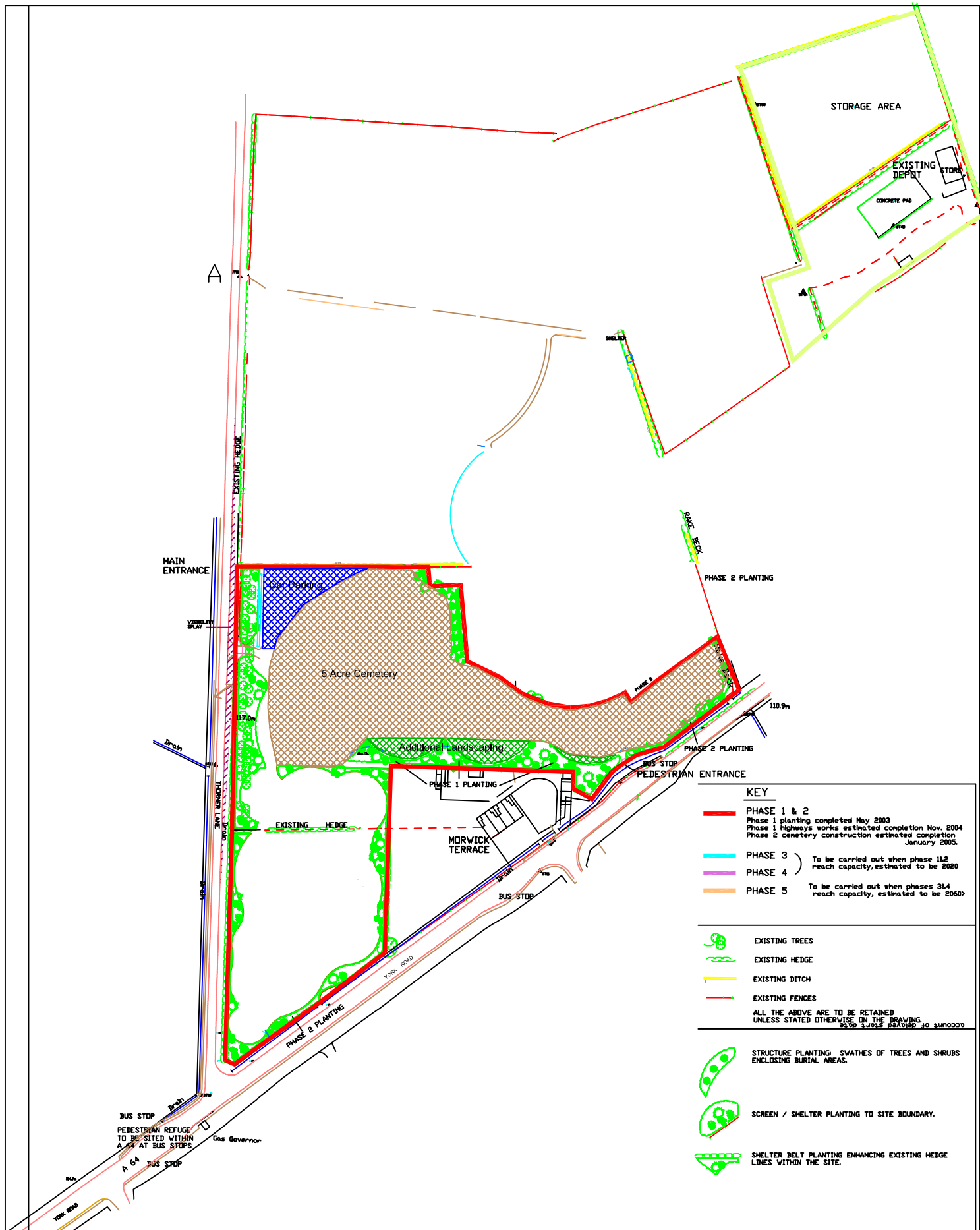


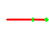
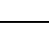





Rev A: Phasing dates altered to take account of delayed start date
 Rev B: Phasing dates altered to take account of delayed start date
 Rev C: Phasing dates altered to take account of delayed start date
 PHASE 1: PLANTING COMPLETED MAY 2003
 PHASE 2: CEMETERY CONSTRUCTION ESTIMATED COMPLETION JANUARY 2005
 PHASE 3: HIGHWAYS WORKS ESTIMATED COMPLETION NOV. 2004
 PHASE 4: TO BE CARRIED OUT WHEN PHASE 1&2 REACH CAPACITY, ESTIMATED TO BE 2020
 PHASE 5: TO BE CARRIED OUT WHEN PHASES 3&4 REACH CAPACITY, ESTIMATED TO BE 2060
 ALL THE ABOVE ARE TO BE RETAINED UNLESS STATED OTHERWISE ON THE DRAWING
 PHASE BOUNDARIES ADDED. RAKE BACK BURIAL EXCLUSION ZONE ADDED. KEY AMENDED.



KEY	
—	PHASE 1 & 2 Phase 1 planting completed May 2003 Phase 1 highways works estimated completion Nov. 2004 Phase 2 cemetery construction estimated completion January 2005.
—	PHASE 3) To be carried out when phase 1&2 reach capacity, estimated to be 2020
—	PHASE 4)
—	PHASE 5) To be carried out when phases 3&4 reach capacity, estimated to be 2060
	EXISTING TREES
	EXISTING HEDGE
	EXISTING DITCH
	EXISTING FENCES
ALL THE ABOVE ARE TO BE RETAINED UNLESS STATED OTHERWISE ON THE DRAWING	
	STRUCTURE PLANTING: SWATHES OF TREES AND SHRUBS ENCLOSING BURIAL AREAS.
	SCREEN / SHELTER PLANTING TO SITE BOUNDARY.
	SHELTER BELT PLANTING ENHANCING EXISTING HEDGE LINES WITHIN THE SITE.

LEVELS BASED ON ORDNANCE DATUM
 OSBM WHINMOOR GRANGE KENNELS 117.52
 OSBM YORK ROAD - No.4 MORWICK TERRACE 114.52

PROPOSED LAYOUT - PLAN B

WHINMOOR REPLACEMENT CEMETERY

